

# JVC

# SCHEMATIC DIAGRAMS

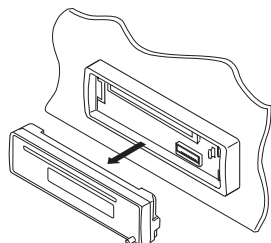
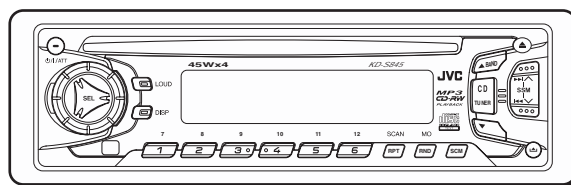
## CD RECEIVER

### KD-S845

CD-ROM No.SML200305

Area suffix

U ----- Other Areas




**MP3  
CD-RW  
PLAYBACK**


**COMPACT  
disc  
DIGITAL AUDIO  
TEXT**

### Contents

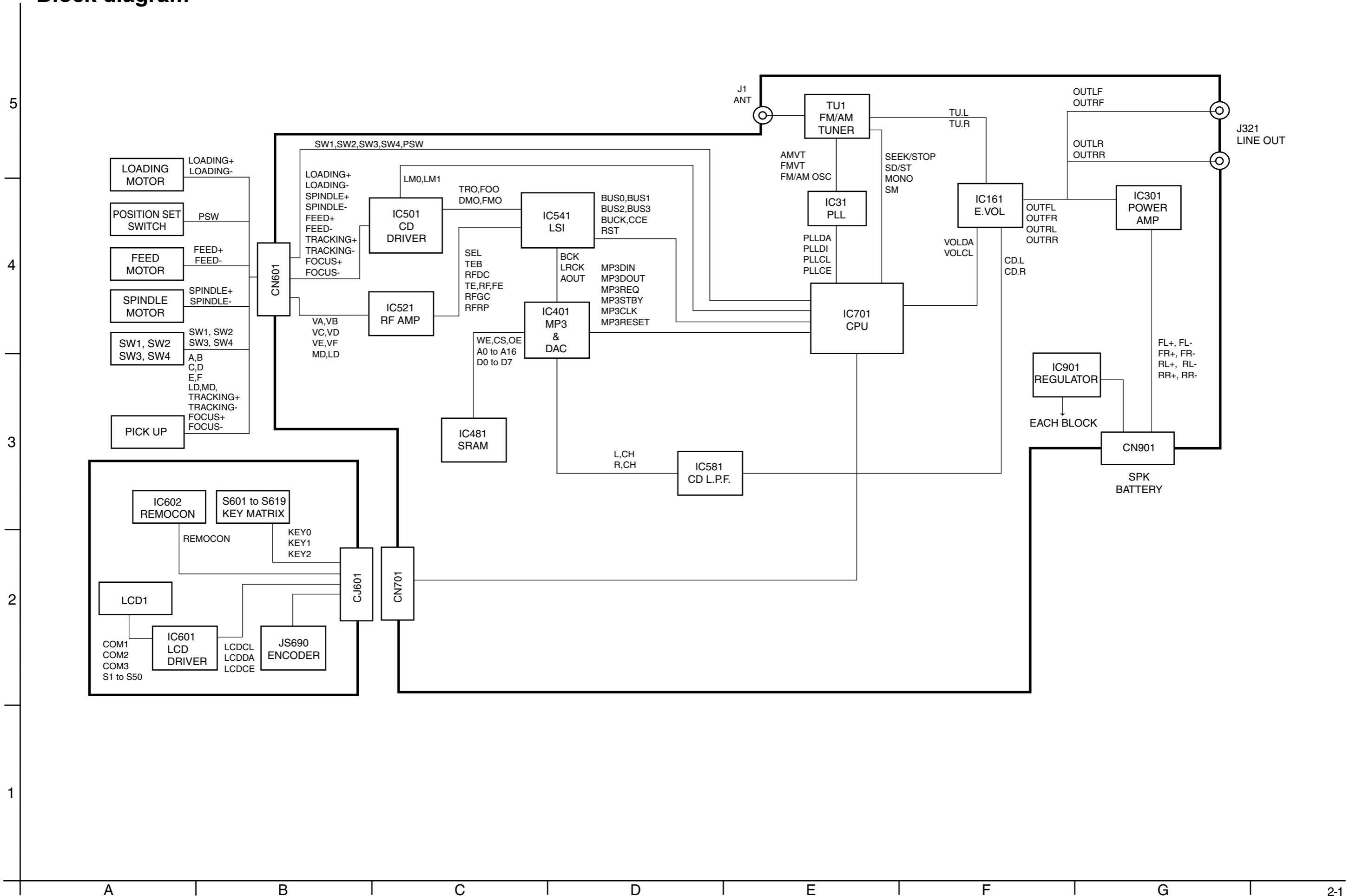
Block diagram .....	2-1
Standard schematic diagrams .....	2-2
Printed circuit boards .....	2-5~7

## Safety precaution

 **CAUTION** Burrs formed during molding may be left over on some parts of the chassis. Therefore, pay attention to such burrs in the case of performing repair of this system.

 **CAUTION** Please use enough caution not to see the beam directly or touch it in case of an adjustment or operation check.

# Block diagram

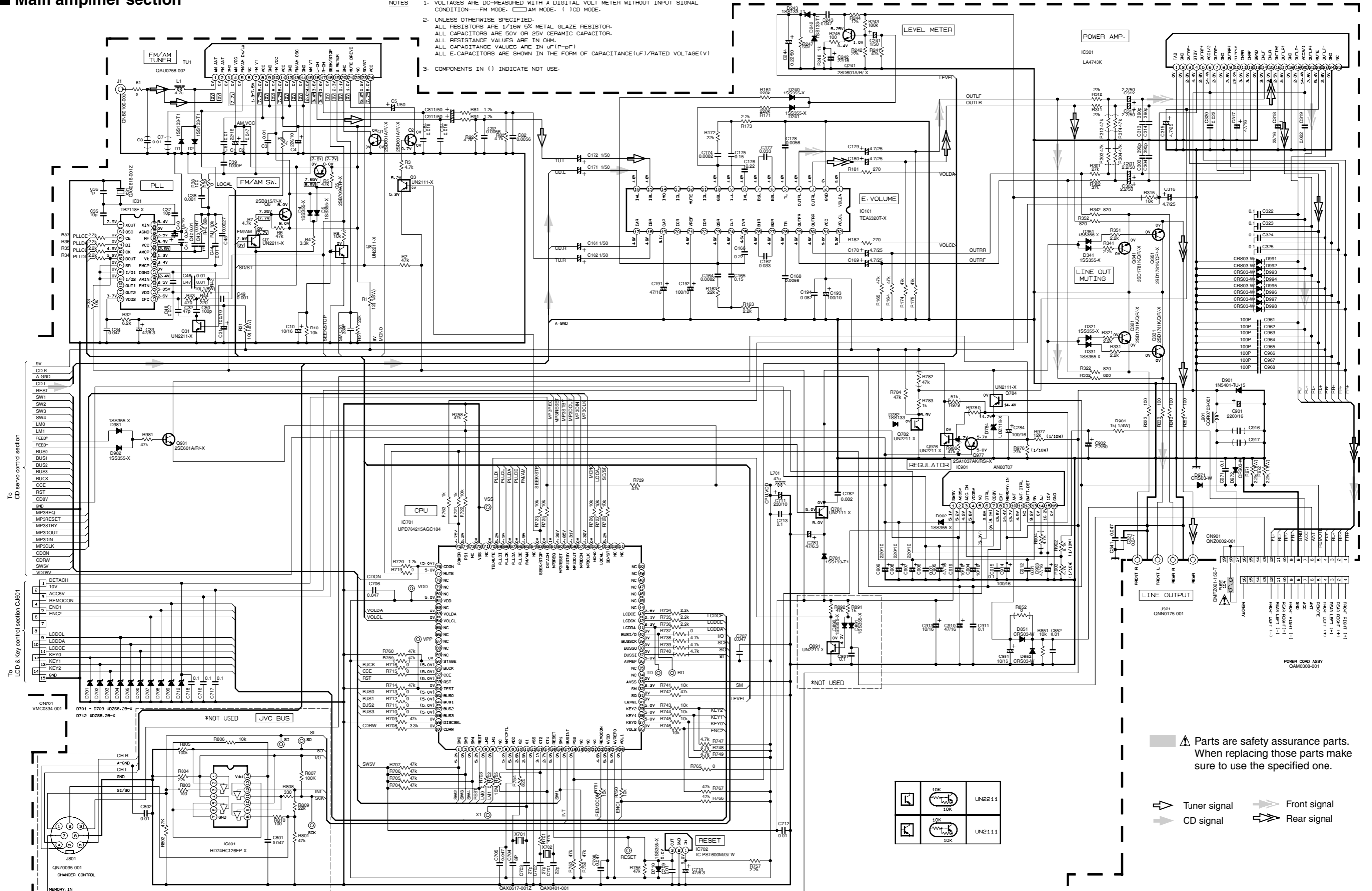


# Standard schematic diagrams

## Main amplifier section

- NOTES
1. VOLTAGES ARE DC-MEASURED WITH A DIGITAL VOLT METER WITHOUT INPUT SIGNAL CONDITION—FM MODE. □ AM MODE. □ CD MODE.
  2. UNLESS OTHERWISE SPECIFIED:  
ALL RESISTORS ARE 1/16W 5% METAL GLAZE RESISTOR.  
ALL CAPACITORS ARE 50V OR 25V CERAMIC CAPACITOR.  
ALL RESISTANCE VALUES ARE IN OHM.  
ALL CAPACITANCE VALUES ARE IN UF(PpF)  
ALL E-CAPACITORS ARE SHOWN IN THE FORM OF CAPACITANCE(UF)/RATED VOLTAGE(V)
  3. COMPONENTS IN ( ) INDICATE NOT USE.

5  
4  
3  
2  
1



To CD servo control section

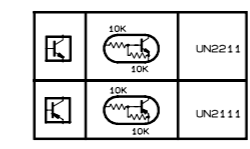
To LCD & Key control section C.1601

- 9V CD.R
- A-GND
- CD.L
- REST
- SW1
- SW2
- SW3
- SW4
- LMO
- LM1
- FEED+
- FEED-
- BUS0
- BUS1
- BUS2
- BUS3
- BUCK
- CCE
- RST
- CD8V
- GND
- MP/PRE0
- MP/PRE0E
- MP/STBY
- MP/SDOUT
- MP/SDIN
- MP/SCLK
- CDON
- CDRW
- SW5V
- VDD5V

- 1 DETACH
- 10V
- ACCSV
- REMOON
- ENCL
- ENCL
- 7
- 9 LCDDL
- LCDDA
- LCDDC
- 10
- KEY0
- 11
- KEY1
- 12
- KEY2
- 13
- GND

- CN701 VM0334-001
- D701 - D709 UD256-2B-X
- D712 UD256-2B-X
- J801 QN20095-001 CHANGER CONTROL
- MEMORY\_IN

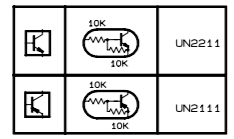
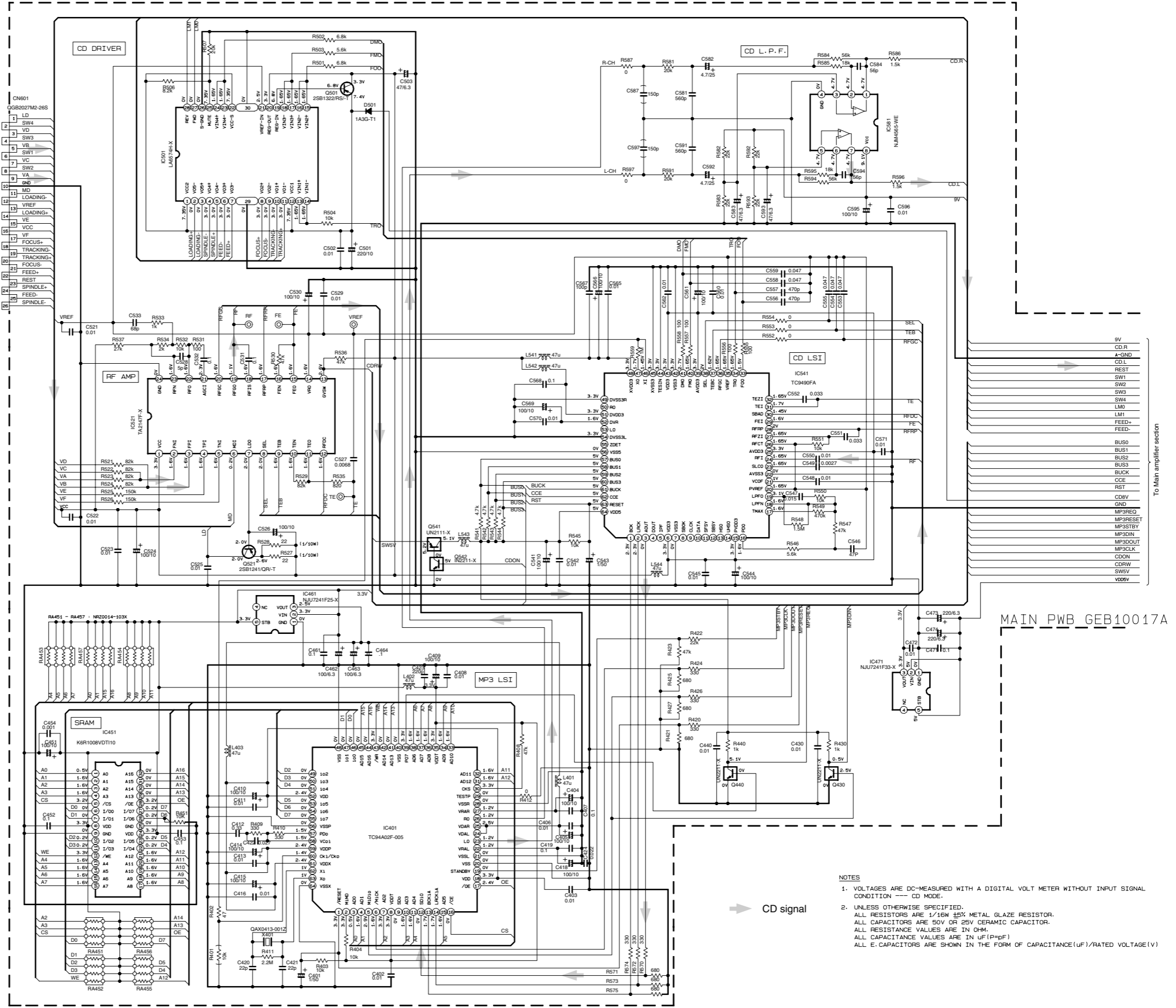
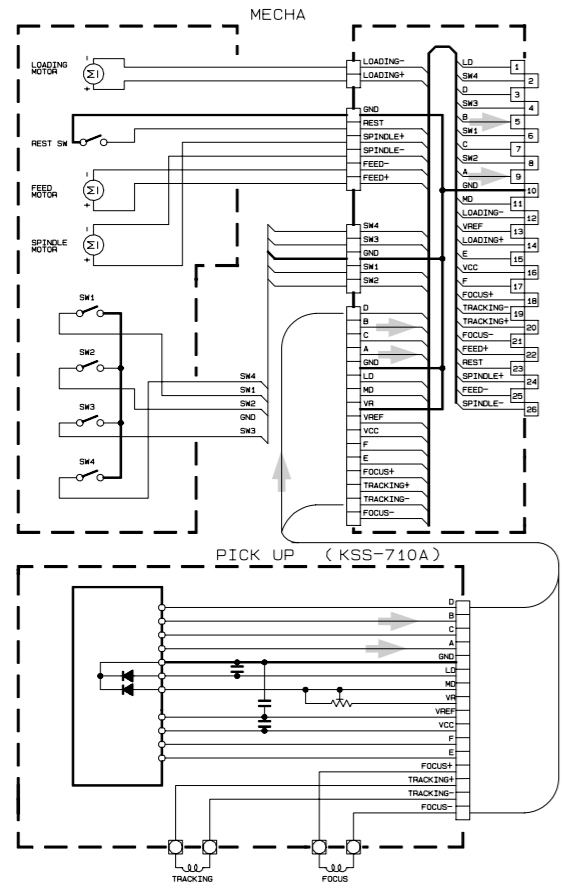
Parts are safety assurance parts. When replacing those parts make sure to use the specified one.



A B C 2-2 D E F G H

CD servo control section

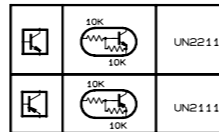
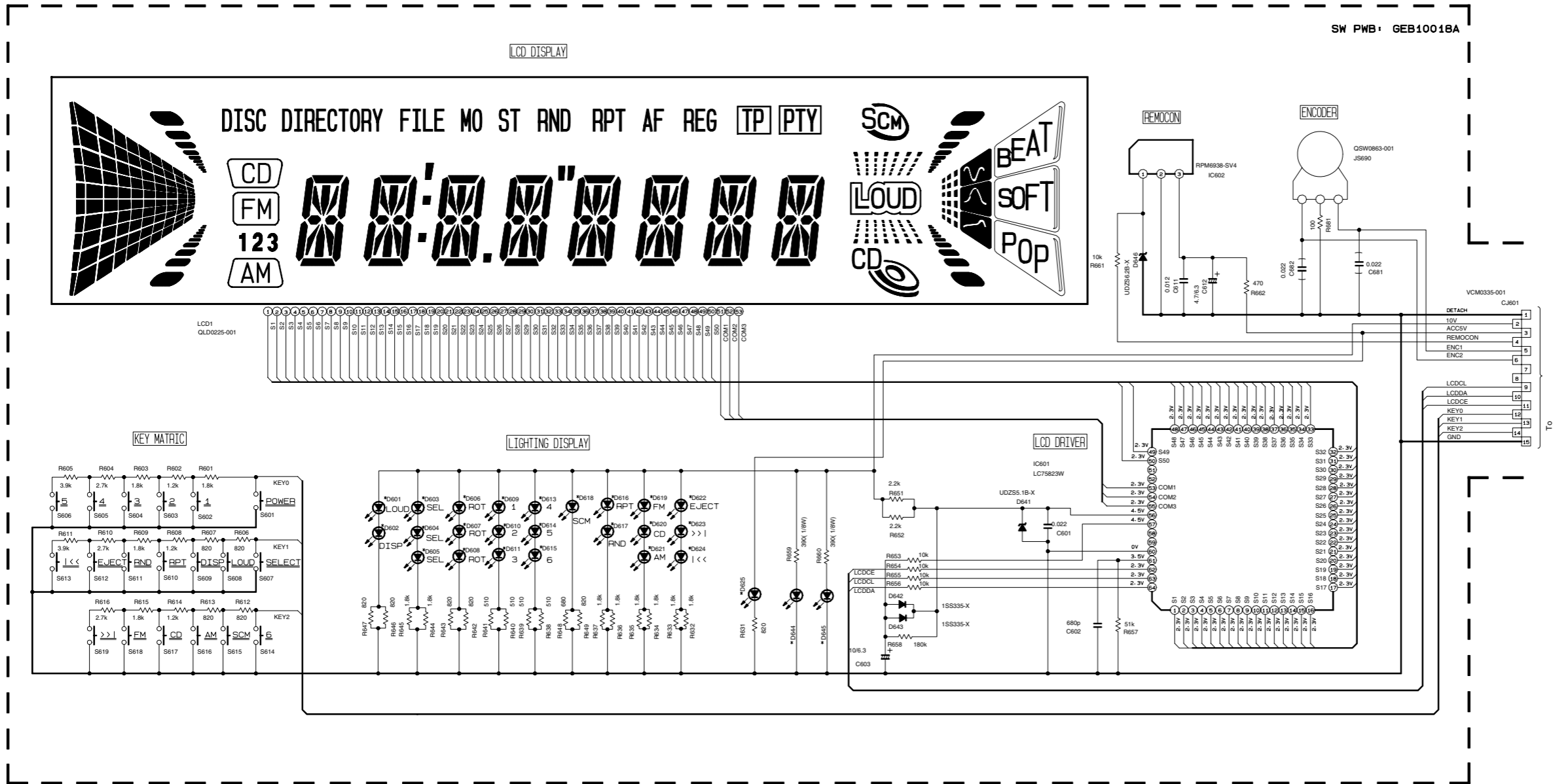
5  
4  
3  
2  
1



- NOTES
- VOLTAGES ARE DC-MEASURED WITH A DIGITAL VOLT METER WITHOUT INPUT SIGNAL CONDITION --- CD MODE.
  - UNLESS OTHERWISE SPECIFIED, ALL RESISTORS ARE 1/16W ±5% METAL GLAZE RESISTOR. ALL CAPACITORS ARE 50V OR 25V CERAMIC CAPACITOR. ALL RESISTANCE VALUES ARE IN OHM. ALL CAPACITANCE VALUES ARE IN uF (p=PF) ALL E-CAPACITORS ARE SHOWN IN THE FORM OF CAPACITANCE(uF)/RATED VOLTAGE(V)

A B C D E F G 2-3

■ LCD & Key control section



\*REMARKS

LCD1	QLD0225-001
D644 D645	WHITE NSPW310BS/BRS/
D601-D611 D613-D615 D619-D624	SML-310VT/JK/-X
D625	SML-310LT/MN/-X
D616 D617	SML-310VT/JK/-X
D618	LT1F67AF-W

NOTES

- VOLTAGES ARE DC-MEASURED WITH A DIGITAL VOLT METER WITHOUT INPUT SIGNAL.
- UNLESS OTHERWISE SPECIFIED.  
ALL RESISTOR ARE 1/16W ±5% METAL GLAZE RESISTOR.  
ALL CAPACITORS ARE 50V OR 25V CERAMIC CAPACITOR.  
ALL RESISTANCE VALUES ARE IN Ω.  
ALL CAPACITANCE VALUES ARE IN μF (P=PF)  
ALL E-CAPACITORS ARE SHOWN IN THE FORM OF CAPACITANCE(μF)/RATED VOLTAGE(V)

5

4

3

2

1

# Printed circuit boards

## ■ Main board

Forward side

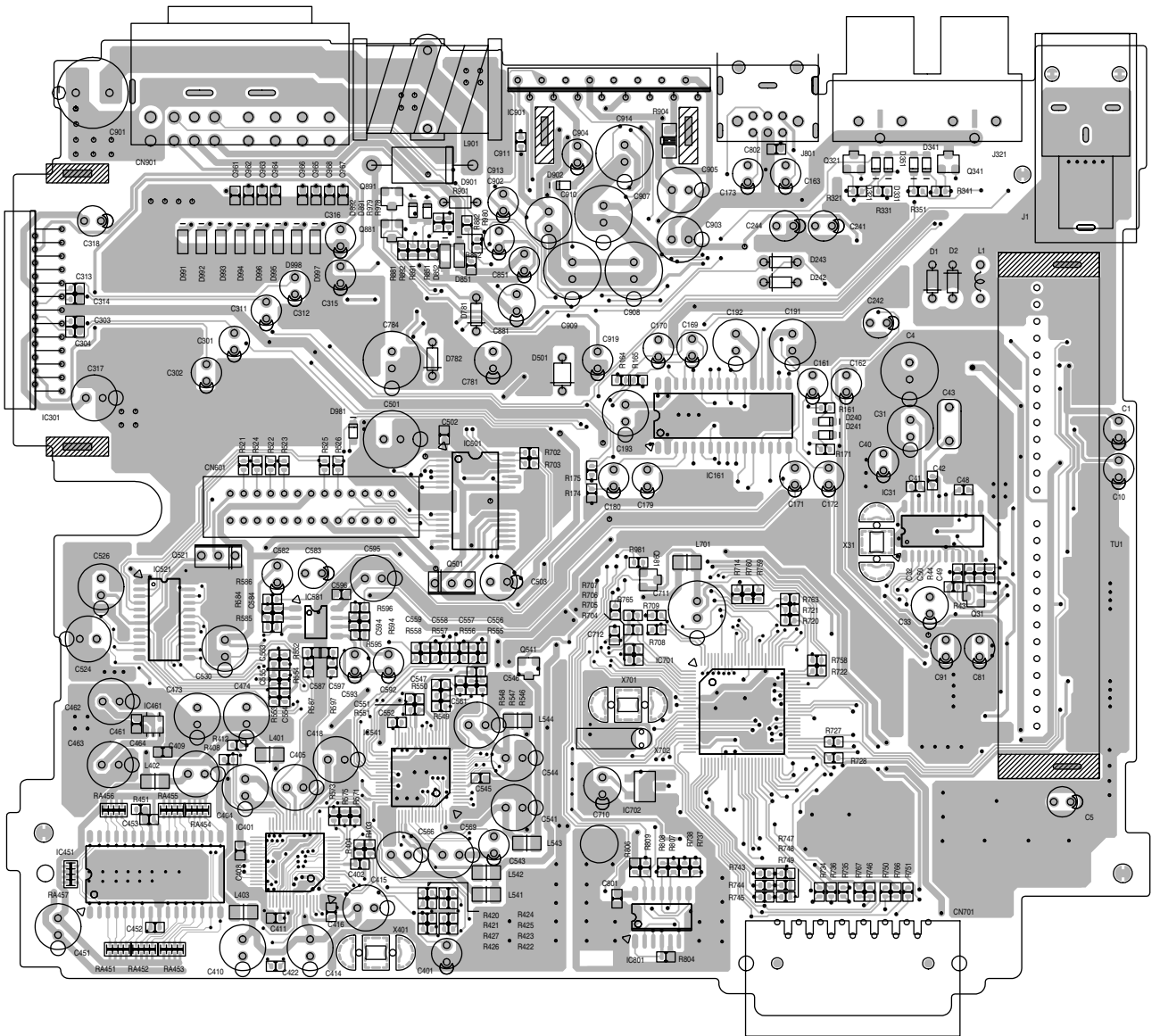
5

4

3

2

1



A

B

C

■ Main board

Reverse side

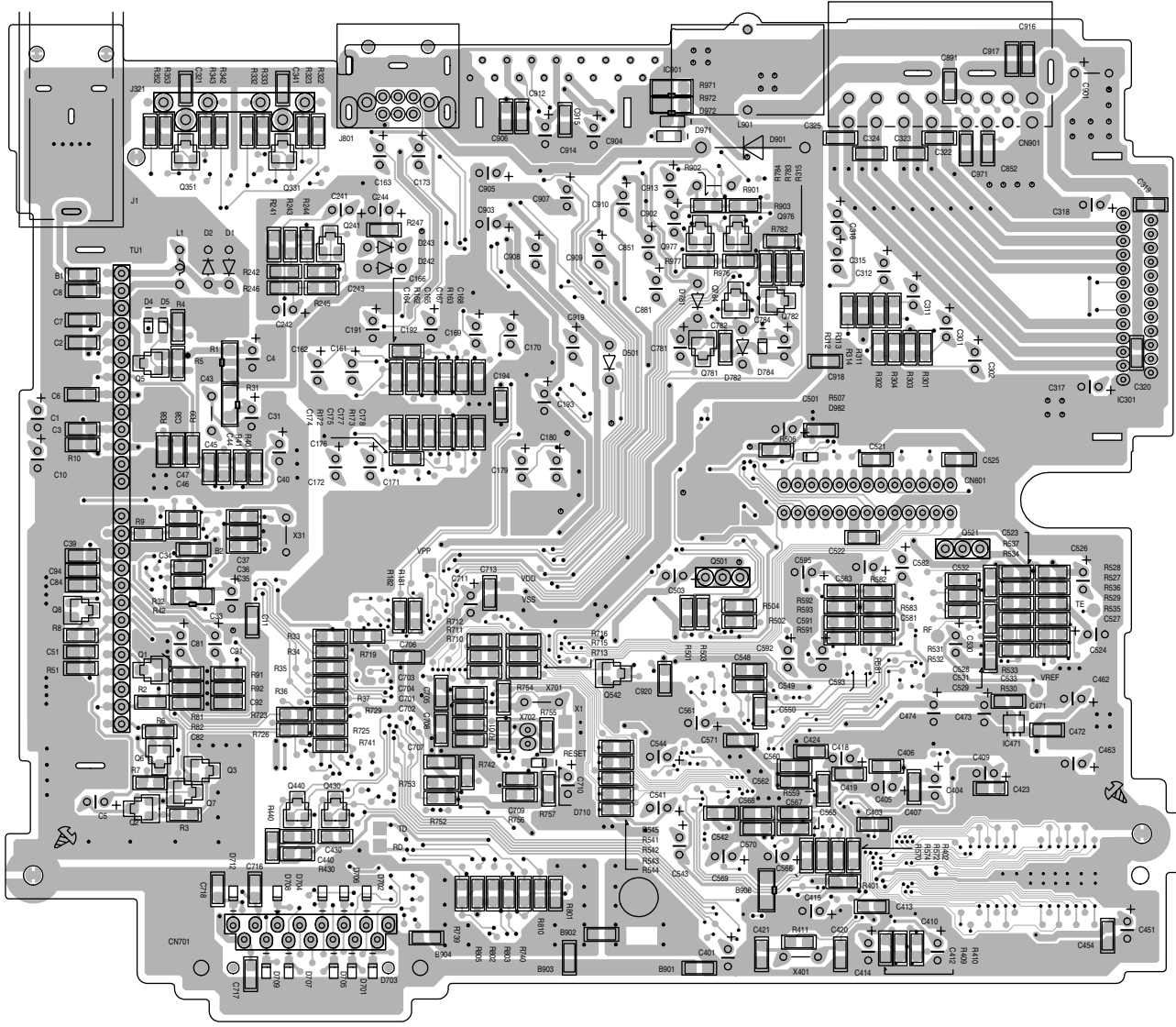
5

4

3

2

1



A

B

C

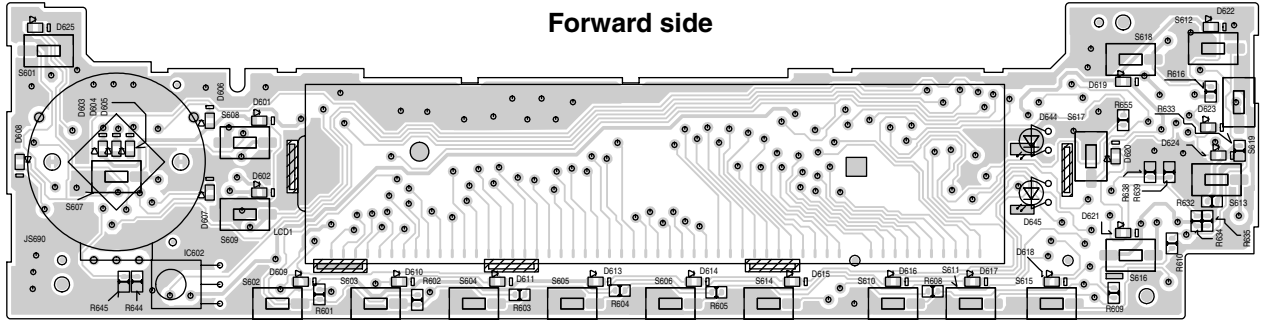
D



■ Front board

5

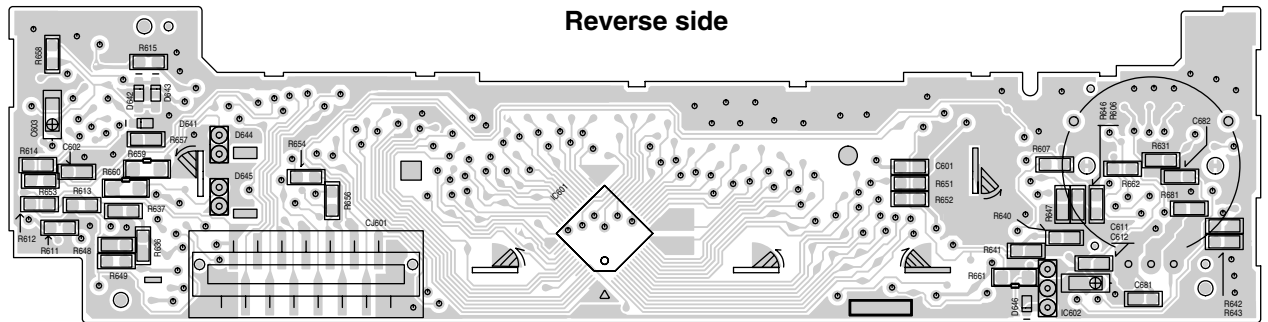
Forward side



4

3

Reverse side



2

1

A

B

C

KD-S845

**JVC**

VICTOR COMPANY OF JAPAN, LIMITED

AV & MULTIMEDIA COMPANY 10-1, 1Chome, Ohwatari-machi, Maebashi-city, 371-8543, Japan

(No.49858SCH)



Printed in Japan  
2003/05